

CULT FICTION

8 Steps To Cult Indoctrination



DECODING
THE LANGUAGE GAME 3.0
of Social Emotional Learning

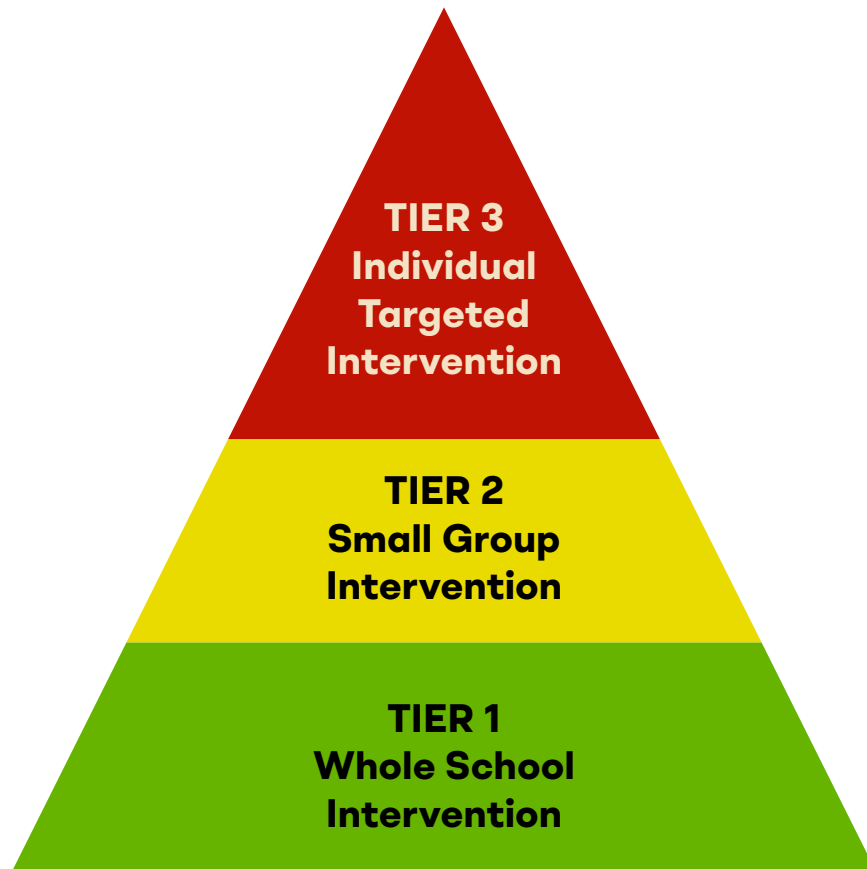


COURAGEISAHABIT.ORG

Introduction

8 Steps to Cult Indoctrination

- What was once a constructive and well-intentioned model for preventative intervention for “at risk” children has been highjacked by radical ideology and is now the **LGBTQ Cult Recruiting Tool in Education**.
- **Every child** entering American Public Schools today is evaluated according to the **Multi Tiered System of Support (MTSS)**.
- All children are considered “at risk” because of their **conditioned biases** and the **systemically racist America** they live in.
- Evaluating every child as “at risk” will only **trap them** into a system that will continue to **indoctrinate them**.



Social and Emotional Learning (SEL) uses
Multi Tiered System of Support (MTSS)

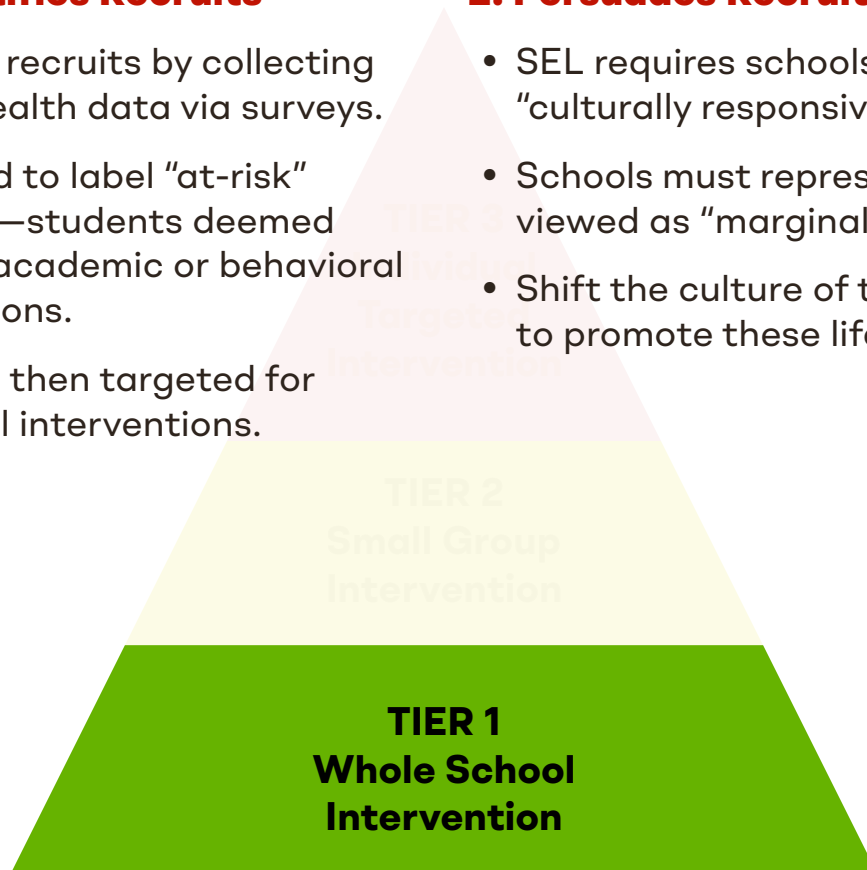
Whole School Intervention

1. SEL Identifies Recruits

- Identifies recruits by collecting mental health data via surveys.
- Data used to label “at-risk” students—students deemed failing in academic or behavioral expectations.
- Identified then targeted for additional interventions.

2. Persuades Recruits

- SEL requires schools to be “culturally responsive.”
- Schools must represent identities viewed as “marginalized.”
- Shift the culture of the schools to promote these lifestyles.



TIER 1

➔ **The Fiction They Sell**

- Means Create Just Ends
- Informed Consent
- Individuality/Diversity
- Facilitates Change



➔ **The Reality**

- Ends Justify Means
- Deceptive Data Gathering
- Conformity/Assimilation
- Preserves Organizational Power

Small Group Intervention

3. Love Bombing

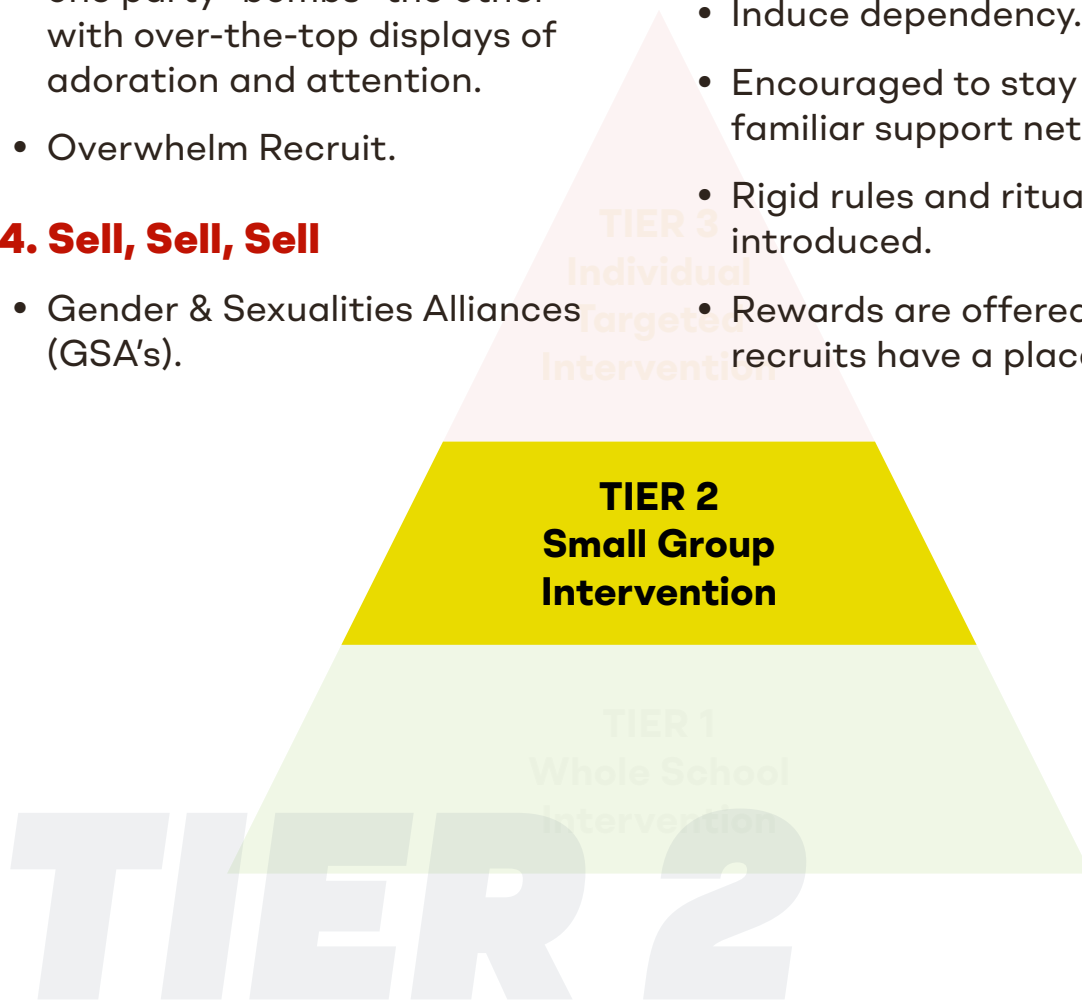
- Pattern of behavior in which one party “bombs” the other with over-the-top displays of adoration and attention.
- Overwhelm Recruit.

4. Sell, Sell, Sell

- Gender & Sexualities Alliances (GSA’s).

5. Tough Love & Group identity

- Reduce autonomy.
- Induce dependency.
- Encouraged to stay away from familiar support networks.
- Rigid rules and rituals may be introduced.
- Rewards are offered because recruits have a place to belong.



➔ **The Fiction They Sell**

- Group Collaboration
- Create Safe Spaces
- Idealization
- Adoration/Attention



➔ **The Reality**

- Reduces Autonomy
- Isolate
- Devaluation
- Induces Dependency

Individual Targeted Intervention

6. Renounce Loved Ones

- School Counselors, social workers, psychologists provide confidential services to recruits.
- Affirm identities.
- Cultivate the view that parents of traditional values/morals are out of touch with reality or even neglectful.

7. Introduction of Core Beliefs

- School Counselors, social workers, and psychologists engage students in conversations about gender ideology as objective truth.
- Students are influenced to assume new identities through a system that will affirm, support, and celebrate them for it.

TIER 3
Individual
Targeted
Intervention

8. Zero Tolerance of Criticism

- School culture supports the use of preferred pronouns, inclusive restrooms and gender ideology.
- Anyone who refutes this is at risk of being ostracized or having disciplinary action. LGBTQ flags, propaganda.

TIER 3

➔ **The Fiction They Sell**

- Confidentiality
- Conscience Culture
- Freedom of Speech
- Critical Thinking



➔ **The Reality**

- Insulate Recruit from Parent
- Indoctrination
- Zero Tolerance of Criticism
- Obedience

CALL TO ACTION

Share this primer with fellow parents and community members and encourage them to begin to refer to the transgender indoctrination as a "Cult".



COURAGEISAHABIT.ORG