

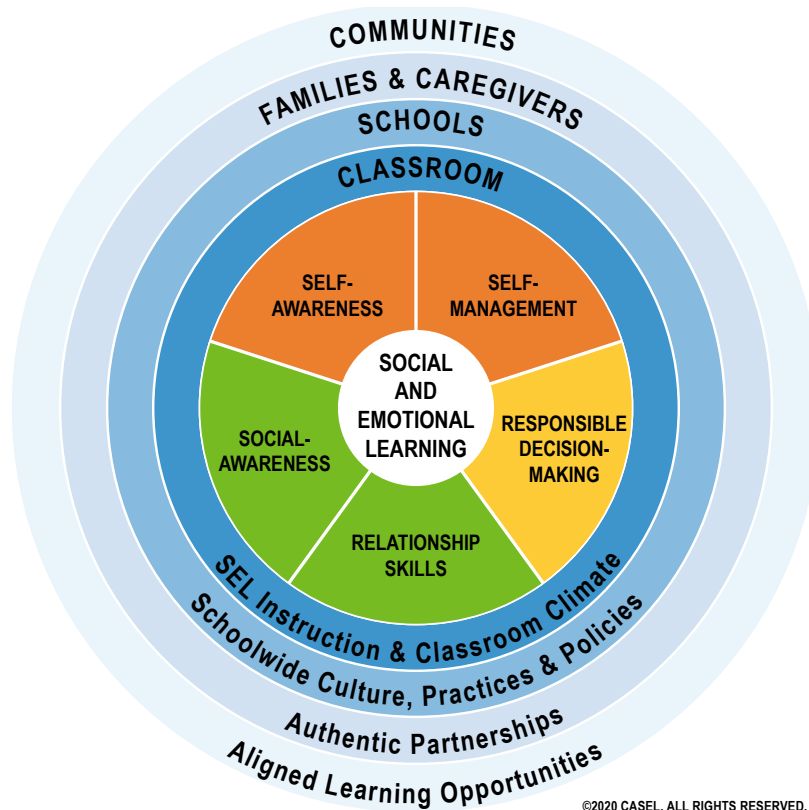


DECODING

THE LANGUAGE GAME 2.0

of Social Emotional Learning

INDOCTRINATING CHILDREN IN PLAIN SIGHT



©2020 CASEL. ALL RIGHTS RESERVED.

WHAT IS THE "CASEL WHEEL?"

CASEL WHEEL

Used in Over 90% of Public Schools in America

It's purpose is to shift the way students view America — away from a traditional way of thinking toward a radical, social justice mindset.

WHAT THEY SAY

Self-Awareness

- Understand one's emotions, thoughts, and values.
- How this influences behavior across contexts.
- Recognize one's strengths and limitations with a well-grounded sense of confidence and purpose.

Self-Management

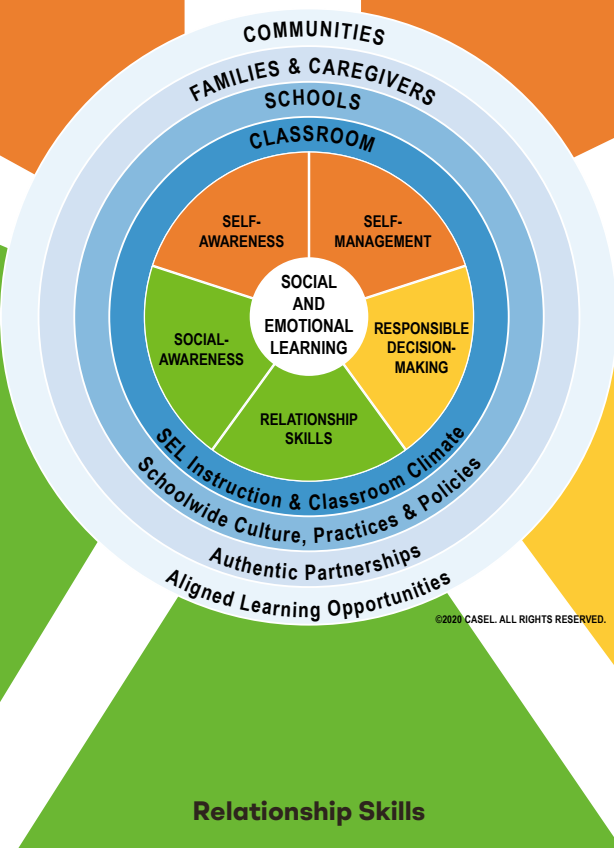
- Manage one's emotions, thoughts, and behaviors effectively in different situations.
- Achieve goals and aspirations.
- Delay gratification, manage stress, and feel motivation & agency to accomplish personal/collective goals.

Social Awareness

- Understand and empathize with others, including those from diverse backgrounds, cultures, & contexts.
- Feel compassion for others.
- Understand broader historical & social norms for behavior.
- Recognize family, school, and community resources and support.

Responsible Decision-Making

- Make caring and constructive choices about personal behavior.
- Consider ethical standards and safety concerns.
- Evaluate the benefits and consequences of various actions for personal, social, and collective well-being.



Relationship Skills

- Establish and maintain healthy and supportive relationships.
- Effectively navigate settings with diverse individuals and groups.
- Communicate clearly, listen actively, cooperate, work collaboratively to problem solve. Negotiate conflict constructively.
- Navigate settings with differing social and cultural demands and opportunities.
- Provide leadership, and seek or offer help when needed.

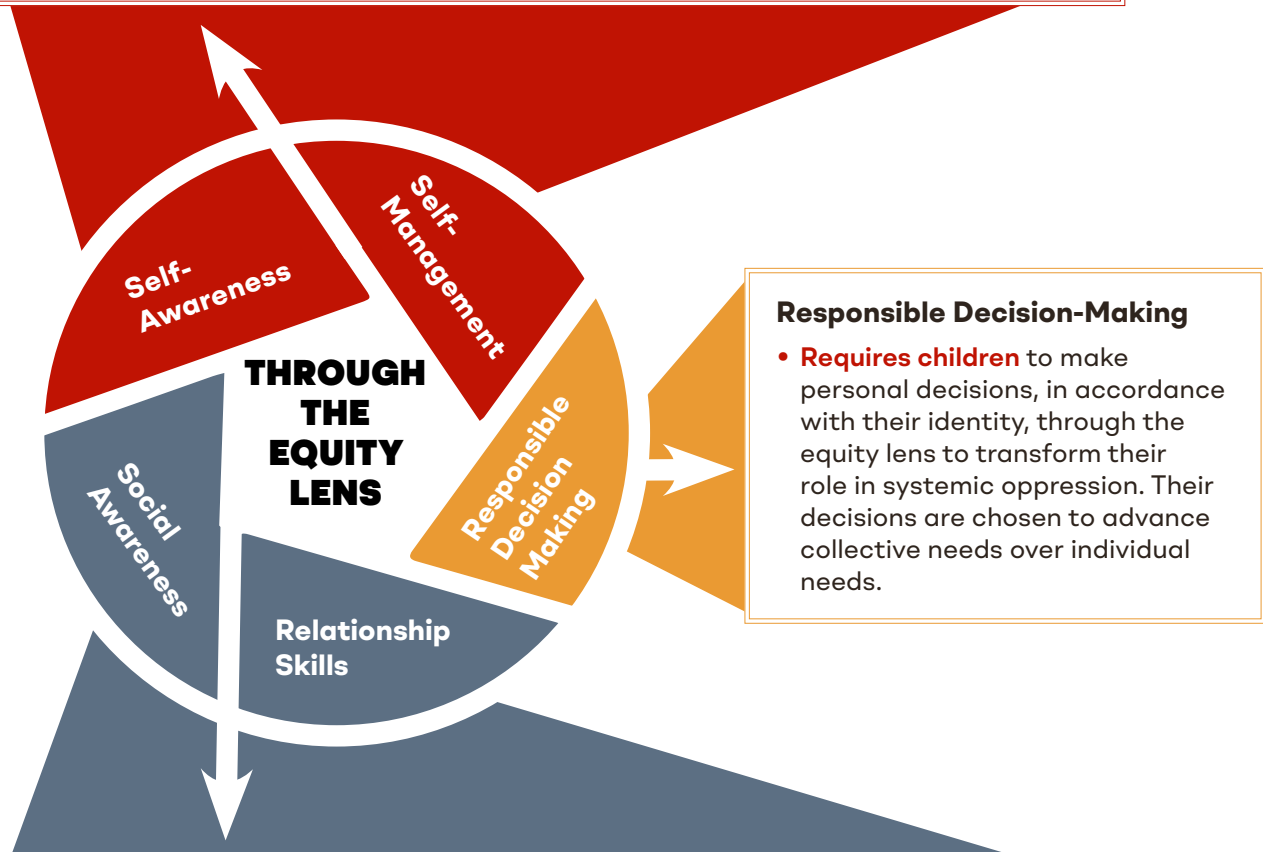


WHAT THEY MEAN

Fundamental to SEL is the belief that systems of power oppress people depending on their race, gender, sexuality, and other identity factors. Equity requires giving some identity groups privileges in order to redistribute resources to the perceived systemic imbalance. SEL framework competencies are delivered through an "Equity Lens".

Self-Awareness & Self-Management

- **Forces children** to assume a personal & social identity through the equity lens. They are exposed to narratives that label their identity as privileged or oppressed. These competencies exploit a child's natural empathy to regulate their emotions through the thought reform process.



Responsible Decision-Making

- **Requires children** to make personal decisions, in accordance with their identity, through the equity lens to transform their role in systemic oppression. Their decisions are chosen to advance collective needs over individual needs.

Social Awareness & Relationship Skills

- **Activates children** to identify privileged groups vs oppressed groups. Children are trained to build relationships for collectivism and form an army of "social change agents" who will divide and dismantle inequitable systems i.e. America.

CALL TO ACTION

Bring this PDF to your child's school and ask them if they use SEL and Culturally Responsive Teaching. When they confirm they do, ask them which competencies they follow.



COURAGEISAHABIT.ORG